

GRAM SATHI

ORGANISATION PROFILE



Name of the Organization : Gram Sathi

Registered Office : Vill + Post- Uper Chak Madhiya , Via-Katoriya, Dist-Banka, Bihar, Pin-813106

Administrative Office : At-Bishanpur, Thadi, Post- Malhara, Via-Dahijore, Dist Deoghar, Jharkhand Pin-814157

Contact Details : Devanand Kumar
Mobile no: +918809597125
Email : gramsathi@gmail.com
Website : www.gramsathi.org

Who We Are :

Gram Sathi (GS) is a grassroots nonprofit development organization that works in Bihar, Jharkhand, West Bengal, Assam and Odisha for marginalized and vulnerable community. Inspired by the idea of Swaraj Program, Peaceful Society, GS a group of young social activists who had been involved in various educational projects and social development efforts in several regions of Bihar, Jharkhand, West Bengal, Assam and Odisha. They joined hands to engage at the grassroots level for the disadvantaged through education, advocacy, research, and social action to preserve the Sampurna Kranti Concept as a means of bridging about social change. The major goal is to empower the disadvantaged through quality education, healthcare, and livelihood promotion with the focus on spreading social inclusion, equity, integrity, dignity, and equality.

Vision :

Gram Sathi visualize a progressive and sustainable society. We envision our people to enjoy peace and dignity, social and economic quality and availing of their fundamental rights in all perspectives.

Mission :

We explore our resources to promote a better quality of life for communities, notably vulnerable population and help them empowered by enriching their lives through education, health and sustainable livelihood skills and opportunities.

Core Values

Our core values are Partnership - Participation – Equity.

Objective.

A. Protect

- Protect child rights through various programs for child labour, child trafficking, child sexual Abuse and child marriage
 - To promote natural resource management, agriculture improvisation, safe drinking water, agro-forestry and environment conservation measures.
 - To protect disabled people and old aged people through programs on health and rehabilitation measures.
 - To protect women in distress to bring them into the mainstream of life.

B. Empowering

- Provide technical knowhow and skills through vocational training and other capacity development programs for livelihood promotion and dissemination of information for local resource management and conservation of traditional system for improving the quality of life and living standards of the people.
- Women Empowerment.
- Develop leadership and capacity of the youth and adolescent for participation in the development process.
- To capacitate community based groups, women SHG in particular for advocacy and social mobilization for actualization of development process among the community.

C. Sustainability

- Strengthen community driven initiatives for people empowerment, sustainable livelihood, health management, total literacy and holistic development of the community in general with an emphasis on the poor and marginalized sections of the society.

Outreach

We have been able to have a significant impact on the lives of vulnerable community in rural and urban areas of 72 districts in Five State of Bihar, Jharkhand, West Bengal, Assam and Odisha state

S.NO.	STATE	DISTRICT	BLOCK
1	Bihar	38	93
2	Jharkhand	16	44
3	West Bengal	6	9
4	Assam	7	12
5	Odisha	5	11

What We Work :

1. **Quality Education:** GS promotes quality education to educationally deprived children in marginalized communities through social awareness, teachers training, capacity building, infrastructure development. To mainstream out-of-school children into the formal schooling system, we offer remedial coaching, a Special Learning Center, library support, tracking, and backup support. As a leader in quality education, GS has developed its resources and people as master educators over time.
2. **Local Governance (Urban and Rural):** GS collaborates with key governance stakeholders in rural and urban geographies such as elected officials, administration, the media, and citizens to address inefficiencies and build capacities for better governance system and accountability through data driven research and advocacy. By collaborating with NGOs and CBOs, GS works with local municipal bodies to increase community participation in urban local self-government to promote development initiatives. Also works in 35 villages of 5 panchayats for strengthening local democracy, formation of GPDP, and spreading awareness on individual and community rights for their over wellbeing. Strengthening Gram Sabha for local governance and impactful decentralization.
3. **Child Rights and Protection:** Child rights and children's concerns are incorporated into all development planning and action through knowledge creation, evidence-based advocacy and communication, and direct assistance to children in need of care and protection.
4. **Youths Development:** Identifying youths and forming their committees and further capacitating them for their contribution in development of the community by counseling, training, and PRA. We also provide life skill training to them for their personal growth. Career counseling helps them alien towards livelihood opportunities to reduce migration, prevents from socially bad practices and grooming them mentally for becoming more responsible towards family and the community. Prioritizing independence is important, especially when it comes to young people with economic disabilities. With the appropriate mobilization, trade-based trainings, grooming, and confidence building, GS supports the youths and guides them into the workforce so they can live independent and dignified lives.
5. **Water, Sanitation and Hygiene:** GS has been actively working with slum dwellers, rural community and elected local development representatives to ensure easy access to safe drinking water, waste management, and best sanitation practices. We built a dump yard, installation of affordable R.O water filter in a urban slums and remote villages, and organized peer group training on adolescent health issues, capacity building of Urban Local Bodies (ULB), and the construction of community and individual toilets.
6. **Health & Nutrition:** GS works on multiple dimensions of health issues including reproductive, maternal, nutrition, child, and adolescent health along with emergency health initiatives like COVID-19 initiative on health. We organize awareness camp, health camp and distribute medicine and sanitary napkins to the community. We also provide technical support and capacity building of local and block level stakeholders related to health and hygiene to promote inclusive and sustainable health among the community.
7. **Livelihood:** GS strengthens the community's capacity to access livelihood opportunities through food and income security interventions such as asset building support, agriculture and livestock trainings, kitchen garden, and the establishment of a community facility center equipped with

agriculture equipment to increase income and reduce expenditure. We also assist in connecting identified vulnerable families with existing schemes and services, as well as providing vocational skills for youth employability.

8. **Linkages with Welfare Schemes:** We track those families who are uncovered under different schemes and facilitate them for their linkages through awareness, departmental advocacy and assistance in fulfilling required criteria. Also organize camps at different location to facilitate them to ensure their linkages as per their eligibility.

Our Projects:

1. Elementary Education Supported by (BLAM) Child Right and You Kolkata:

GS works on community mobilization and empowerment for quality education and the right to education as part of efforts related to elementary education. In order to speed up the pace of learning for children, it has also invested in developing the capacity of SMC members, teachers, and local institutions. To mainstream out-of-school children into the regular educational system, GS has offered remedial coaching, Special Learning Center, Library support, tracking, and back-up support. Being a pioneer in high-quality education, GS has trained its personnel throughout time to become master educators, micro planning for Elementary Education. Along with organizing training for teachers and SMCs to strengthen their capacities, they also collaborated with government stakeholders to design training modules. About 21,000 out-of-school children have been mainstreamed into the formal education system by GS so far, with good retention and performance in the classroom. According to the midterm evaluation reports, GS was able to increase the regularity of the monthly reflection meeting based on the CRC by 48% from what it was at the beginning of the project. 2014-15 By next year, with continuous interventions, we hope to have accomplished around 90% of the project's goals, up from the organization's current 80% success rate.

2. Project Vidya (Supported by Rotary India literacy Mission)

In partnership with Rotary India Literacy Mission, Gram Sathi has launched the "Vidya" project in Ramgarh block, Dumka, Jharkhand, establishing 50 Vidya Centers aimed at improving literacy and educational access in rural communities. These centers provide quality education to children from underprivileged backgrounds who often lack access to formal schooling. The initiative focuses on foundational literacy, numeracy, and essential life skills, aiming to bridge educational gaps and build a strong academic foundation for young learners.

The Vidya Centers are equipped with trained facilitators who follow an engaging curriculum tailored to meet the local community's needs. Each center fosters an inclusive and supportive learning environment, encouraging children to develop critical thinking and problem-solving skills. Alongside academic learning, the project emphasizes the importance of values, hygiene, and social awareness, helping students grow holistically.

Through this initiative, Gram Sathi and Rotary India Literacy Mission are working to create a sustainable impact on literacy levels in Dumka's rural areas, striving to empower the next generation with the tools they need to succeed. The Vidya Centers represent a vital step toward a more educated and empowered community, contributing to a brighter future for children in Ramgarh block.

3. Water Conservation Project for Livelihood Development through Agriculture Promotion for Marginal Farmers

Supported by Arohan Financial Service Limited, Kolkata:

Under this project, Gram Sathi encourages farmers to adopt optimum farming methods to maintain their livelihood and diversify their diet through trainings and workshops. 1200 farmers from rural communities in the Dumka district received input support after numerous exposure visits to the model of the Sustainable Integrated Farming System were conducted with the farmers. Water Conservation & plank dissemination Trench cum Bund construction - 50 hector

Big Tank/Pond excavation 100 X100 X10

Small Pond/Dova Construction 60X60X10

Tin plank dissemination on Pond, water conservation, trench site

Strengthening of Community based organization

50 Meetings with Villagers and Gram Sabha members

25 Meetings with PRI & Govt. Line Depart. & PMC

Formation and promotion of Users group & PMC

4. Water Management project (Supported by Linde Foundation)

The Water Management Project in Pakur district, Jharkhand, implemented by Gram Sathi with Linde Foundation support, is focused on sustainable water conservation and improved agricultural practices. Core activities include constructing trench cum bund structures across 50 hectares and excavating large ponds (100x100x10 feet) and smaller dova ponds (60x60x10 feet) to increase water storage. Community involvement is crucial, with 50 village meetings and 25 sessions with PRI members, government officials, and PMCs to discuss water strategies and foster support. Ecological sustainability is promoted by planting mango, guava, and timber species along bunds, with bio-fertilizer and nurturing support for income and soil conservation. Training programs are provided for 50 participants on rainwater harvesting and 200 farmers in dryland farming. To track progress, a baseline survey, mid-term evaluation, and annual assessments are conducted. Through these initiatives, Gram Sathi and the Linde Foundation aim to create a resilient agricultural system and empower local communities in sustainable water management.

5. SHG formation and linkages (supported by NABARD)

Under the Women Empowerment initiatives GS has been working for SHG promotion and their financial inclusion to support livelihood opportunities for the vulnerable families of rural areas of Deoghar and Dumka district. Currently there are 600 SHG groups where more than 7200 women are active in their respective groups and initiatives. These groups have been linked to financial institution and Jharkhand State Livelihood Promotion Support.

6. Mobile Connections to Promote Women's Economic Development (MPOWERED) Supported by Trickle up India Foundation

The Gram Sathi Women Empowerment Program, backed by Trickle Up India Foundation, is a transformative initiative targeting economic and social advancement for women in Ramgarh block of Dumka districts of Jharkhand. Addressing economic and gender disparities, the program offers

marginalized women skill development, entrepreneurship training, and access to market resources to foster self-sufficiency and financial independence.

Focused on women from vulnerable communities, the program provides essential training in financial literacy, entrepreneurship, and locally relevant vocational skills, including tailoring, handicrafts, and food processing. These modules equip participants with practical skills to establish sustainable livelihoods. Alongside skill-building, the program promotes the formation of self-help groups (SHGs), fostering a support network where women can access savings and credit facilities, share experiences, and advocate for their rights.

Additionally, the program offers mentorship and market access, facilitating connections with customers and encouraging business growth. Gender equality and women's rights awareness are core aspects, empowering participants to challenge social norms and engage in community leadership roles, thus strengthening their agency.

By uplifting women economically and socially, this program enhances the quality of life for participants and their families while contributing to broader community development. Trickle Up India Foundation, in partnership with Gram Sathi, aims to create an equitable society where women are empowered contributors, driving positive change and reducing poverty. Through this program, marginalized women are equipped to break cycles of dependency, fostering a resilient and inclusive community.

7. Financial Literacy Program (Supported by NABARD)

Financial literacy is the ability to understand and use various financial skills, including budgeting, saving, investing, and managing debt. It involves knowing how to track income and expenses, set and achieve financial goals, and make informed decisions about credit, insurance, and taxes. Key components include creating a budget, maintaining an emergency fund, understanding credit scores, and planning for retirement. Improving financial literacy involves continuous learning through resources like books, online courses, and financial apps. With strong financial literacy, individuals can achieve financial stability, avoid debt, and secure a prosperous future.

8. Center for financial literacy (Supported by Reserve Bank of India)

Gram Sathi, in collaboration with the Reserve Bank of India (RBI), runs a 35 Financial Literacy project aimed at empowering rural communities with essential financial knowledge. This initiative targets economically vulnerable groups in rural areas, particularly in Jharkhand, where financial exclusion remains a barrier to economic stability and growth. By establishing financial literacy centers at the village level, Gram Sathi provides critical training on fundamental financial topics, including savings, investments, debt management, digital banking, and safe banking practices.

Community facilitators at Gram Sathi conduct engaging workshops and one-on-one counseling sessions, tailored to the local context, ensuring that financial concepts are accessible and relevant. Special attention is given to women, farmers, and daily wage earners, who often lack formal banking access and are unaware of government financial schemes. Through these programs, Gram Sathi helps participants understand their rights, access banking services, and make informed financial decisions that enhance their economic resilience.

Supported by the RBI, Gram Sathi's efforts contribute significantly to increasing financial inclusion in rural Jharkhand. By promoting financial literacy, Gram Sathi not only aids in improving individual livelihoods but also fosters a more financially aware and empowered community.

❖ 9. Climate Change (Supported by the Linde Foundation)

Gram Sathi has launched a climate change initiative in Ghatsila, East Singhbhum, to help rural communities adapt to environmental challenges. This project equips local farmers with knowledge and tools to counteract the impacts of climate change, focusing on sustainable farming and water conservation. Training sessions cover organic farming, soil health, rainwater harvesting, and climate-resilient crop varieties, aiming to create a sustainable, eco-friendly approach to agriculture.

- ❖ Gram Sathi's initiative promotes the reduction of chemical inputs in farming, encouraging organic practices that are healthier for the land and community. The Linda Foundation's backing allows for practical pilot projects, including rainwater harvesting systems and composting, serving as demonstration models for effective climate resilience. Through this initiative, Gram Sathi empowers farmers to protect their livelihoods and build environmentally sustainable practices, fostering resilience in the face of climate unpredictability

10. Women empowerment program (Supported by NABARD)

Access to productive assets can enhance social security by increasing productivity, leading to higher enhanced and more stable incomes among SHGs. Saving enables individuals and households to invest in quality healthcare services, including preventive care, diagnostics, and treatment. With the assistance of NABARD access to quality healthcare can improve health outcomes, reduce the incidence of illness and disability, and enhance overall well-being. Moreover, saving for healthcare expenses can provide financial security. Investments in education and skill development can enhance individuals' capacity to participate in the labor market, earn higher incomes, and contribute to economic growth. By empowering marginalized groups and narrowing socio-economic disparities, increased skills can foster a more inclusive and equitable society.

11. Organization development program:

With the purpose of impulsive generative issues of NGO compliance and improving the derivate to organization development criteria. Regulated objectives from Dhvani foundation, activities are involving in provinces ODP indicator and equipped to navigate change and uncertainty. Indicators such as the speed of decision-making, employee willingness to embrace change, and agility in responding to market dynamics can measure the organization's adaptability. Also it delivers enhanced teamwork and collaboration are often outcomes of successful OD programs. Metrics such as team performance assessments, project success rates, and employee feedback on team effectiveness can indicate improvements in team dynamics.

12. SDG oriented resolve program:

The impact of the development is sustained through variable development goals associated through agri based livelihood and NTFP activity also managing natural resource in water restoration strategy. Environment accumulated activities for preventing carbon emission and greenhouse gas repulsion is objectified in the curricular of rural mass. Creation of partnership and employment led approaches are stable in deliberates at its schematic intervention. Solid base of the UNDP guidelines, the competence of social development is stratified into various activities directly involved in rural beneficiaries with help of local governances and support. It includes irrigational facilitation, plantation and NTFP activities (lac cultivation) to enhance the rural empowerment and environment precisely.

13. Health and Hygiene:

- ❖ Among the multidimensional development activities, rural community are urged to find the resolve at Banka, Bihar. With the help of ICDS (Anganwadi) at 30 centres are involved to improve the social health was processed. The rural health and rural community was directly involved to its core competence. At 30 Anganwadi, Banka; Aid Boxes were distributed and the performance of aid needy people are included to the benefactor of the plan.

14. Free Health Check up camp (Supported by AROHAN)

Gram Sathi, in partnership with Arohan Financial Services Limited, organized a free health check-up camp in Dumka, Jharkhand, aimed at improving healthcare access for rural communities. This initiative provided essential medical services, including general health screenings, blood pressure and glucose level checks, and consultations with doctors and healthcare professionals. The camp especially focused on reaching marginalized groups who often lack access to regular healthcare facilities.

Through this camp, Gram Sathi and Arohan Financial Services addressed prevalent health issues and raised awareness about preventive care, hygiene, and wellness practices. Attendees received guidance on managing common ailments and lifestyle-related health concerns, along with information on government health schemes and resources available to them.

This collaborative effort not only supported immediate healthcare needs but also emphasized the importance of regular health monitoring and preventive measures, contributing to overall community well-being in Dumka.

15. Healthy Diet for Mother and Child

In Ramgarh, Dumka district, Jharkhand, Gram Sathi has initiated a project to ensure a healthy diet for mothers and children, focusing on maternal and child nutrition. Recognizing the critical “first 1,000 days” of life—from conception to age two—this program addresses malnutrition, which affects growth and cognitive development. Gram Sathi conducts community workshops educating families on balanced diets, emphasizing vegetables, fruits, proteins, and essential vitamins. Mothers are trained to prepare nutritious meals using local ingredients, and small kitchen gardens are encouraged for fresh produce access. Collaboration with local healthcare providers and Anganwadi centers ensures regular check-ups and nutritional support, including supplements when needed. The initiative also promotes breastfeeding, proper weaning, and hygiene to prevent malnutrition-related illnesses. By fostering nutritional awareness and sustainable dietary practices, Gram Sathi aims to reduce malnutrition, creating a healthier, more resilient future for mothers and children in Ramgarh.

Future Plan :

1. Food and Livelihood Security

Gram Sathi aims to strengthen food security and provide sustainable livelihood options for rural and tribal communities. By initiating goat rearing and backyard poultry projects, we plan to support 2,000 families in developing additional income sources. Additionally, training 500 farmer families in modern agricultural techniques will improve crop yield and resilience to climate challenges. Through these efforts, we strive to ensure that 5,000 families experience improved food security, paving the way for self-sustaining communities.

2. Social Empowerment and Skill Development

- ❖ Empowering communities economically and socially remains a core objective. We plan to form and strengthen 1,000 Self-Help Groups (SHGs) to foster collective savings and credit among rural women, promoting financial independence. Skill development initiatives will include employment-oriented training for 1000 women and vocational training for 2000 youth. By building local capacity, we aim to reduce migration, strengthen household incomes, and improve community well-being.

3. Child Protection and Welfare

Our child protection strategy will focus on preventing child marriage, trafficking, and child labor. We will launch 100 programs focused on these areas, providing a safer environment for children. To support health and education, we'll organize camps for 5,000 children and adolescents, ensuring access to essential services and guidance. Awareness campaigns will also be conducted to educate 500 women and children on child rights, health, and the importance of education.

4. Health, Sanitation, and Environmental Security

To improve health and sanitation, Gram Sathi will conduct 200 health camps, focusing on preventive care and hygiene education. In addition, we aim to educate 10,000 individuals on personal hygiene practices and implement sanitation projects across 100 villages. Our environmental initiatives will promote solar energy adoption among 500 families and include 200 tree plantation drives. Water conservation and management projects in 50 villages will also address critical water shortages and promote sustainable resource use.

5. Financial Inclusion and Literacy

Financial literacy and inclusion will be enhanced through training programs for 16,00,000 individuals, focusing on budgeting, savings, and financial planning. By facilitating bank account openings for 2,0000 unbanked families and providing access to microfinance for 1,50000 families, we aim to increase economic stability. Through workshops and awareness campaigns, we will promote financial planning skills, equipping communities to manage their resources effectively and achieve long-term financial resilience.

Organizational Strengths

Senior Management Team

Senior Management Team provides strategic leadership to translate the organization's vision into actionable goals. With expertise in governance and resource management, they guide departments, foster collaboration, and maintain accountability. They secure funding, build partnerships, and advocate for policy changes, ensuring sustainable growth and impactful outcomes through strategic planning and innovation.

Program Team

The Program Team leads our mission by designing, implementing, and evaluating impactful, community-centered programs. They excel in project management and adapt to field challenges, ensuring programs stay aligned with goals through regular assessments and community feedback. Their dedication to innovation strengthens our connection with the communities we serve.

HR Team

- ❖ The HR team is essential in building a positive, productive culture by attracting and developing talent organization-wide. They organize training, workshops, and reviews to support growth, create policies for diversity and well-being, and foster a cohesive environment. Their efforts drive team success and advance the organization's mission.

Master Trainers

- ❖ Being a leader in quality education the organization over the time has developed its resources and people as master trainers in Education, Urban Governance, Micro-Finance, and Micro-Planning. The master trainers are capable of developing training materials, modules and dissemination of the same in varied and exceptional manner.

Street Theatre Team

- ❖ The organization has developed its own team for street theatre which comprises of 7 members who are vibrant and energetic. The areas of expertise are in Education, Community Mobilization, Awareness scripts based on community sensitive issues etc. The team has its own instruments and resources which are being developed out of the team fund.

Community Mobilization Team

- ❖ The community mobilization team is very energetic and apt in its work and talent. The team has its methodology, process and activities through which it's able to mobilize communities for causes that are relevant for the organization and the community. There are regular meetings of the communities on different thematic areas and topics.

Research Team

- ❖ The research team is very active on the issues that it engages in research. For example, in education new things are searched for and experimented in the field. Once the result is positive and replicable, an advocacy is done for the same. Once it's passed by all the concerned parties it's made final.

Annual Grants Received and Expenditure summary of last 3 years

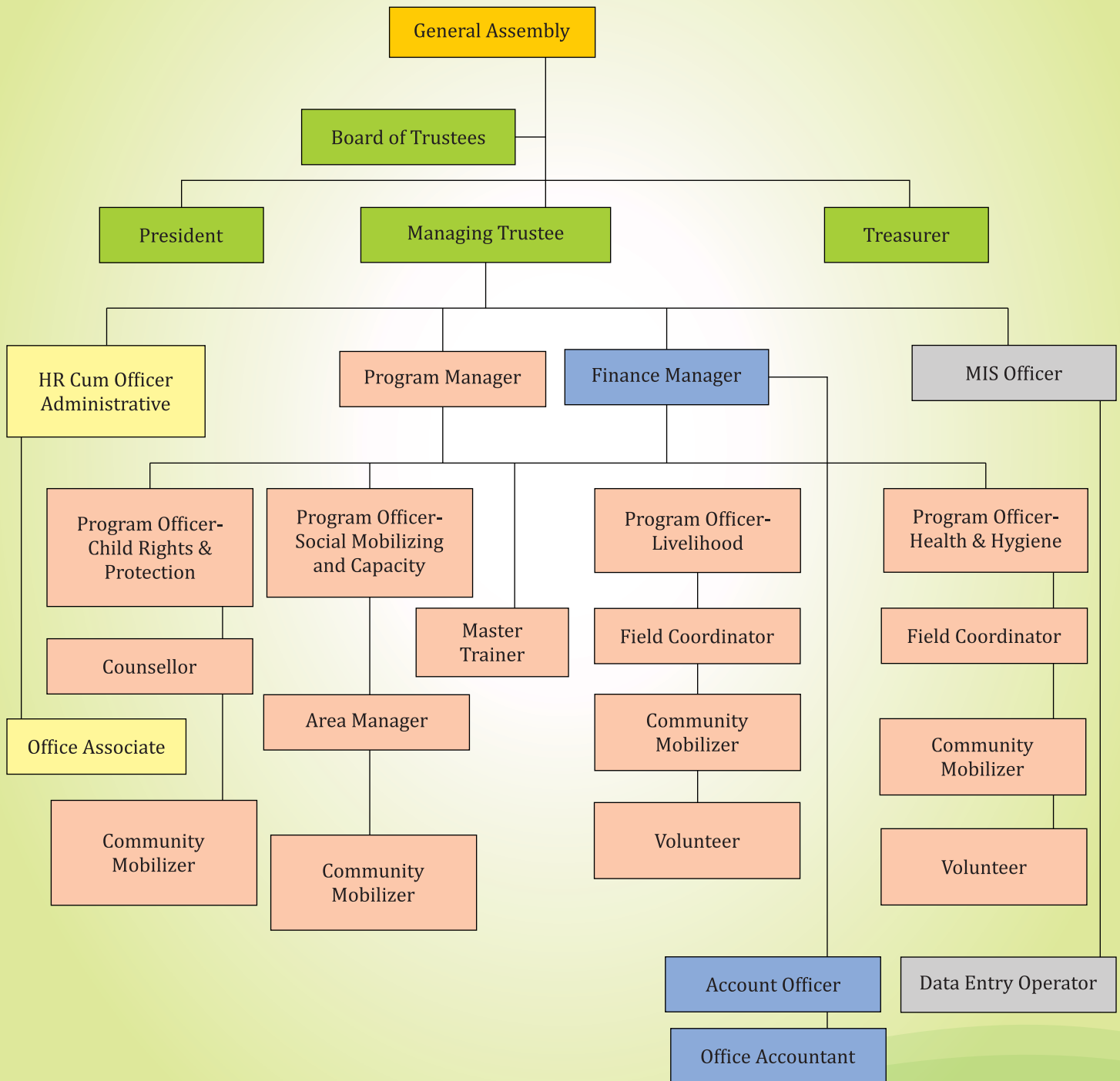
Financial Years	Income (in Rs.)	Expenditure (in Rs.)
2021 - 2022	44.28 Lac	49.77 Lac
2022 - 2023	87.06 Lac	80.79 Lac
2023 - 2024	02.66 Cr	02.66 Cr

Awards & Recognition

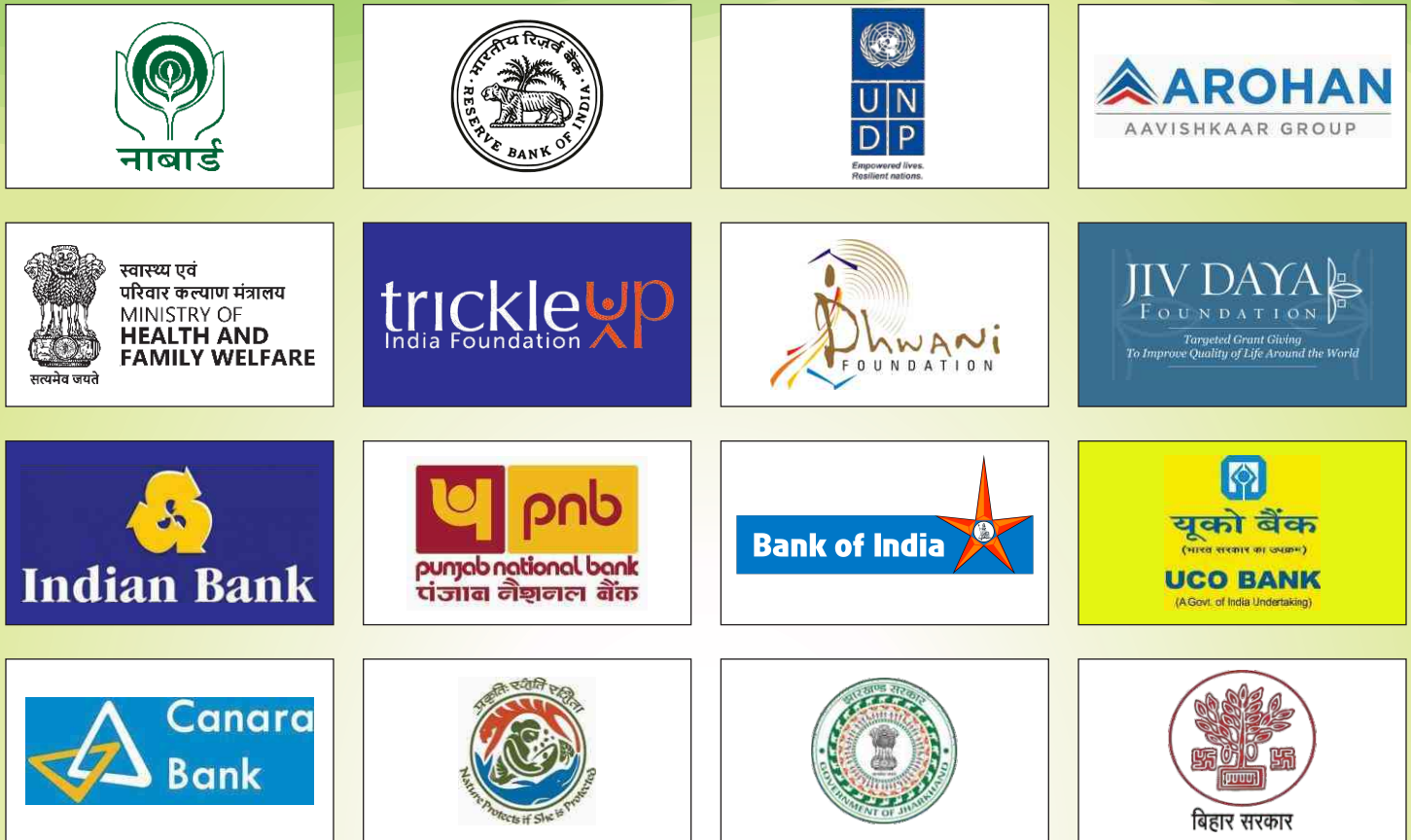
1. Best Livelihood Program Implementing Agency (3rd) –by NABARD State level SHG Award Ceremony, Jharkhand, India
2. Recognition of Partnership Implementing Agency –by Kailash Satyarthi Children Foundation US.
3. Recognition of reputed Partnership Implementing Agency-by Reserve Bank of India (CFL program), Jharkhand, India
4. Recognition of reputed Partnership Implementing Agency-by Reserve Bank of India (CFL program), Bihar, India.
5. Partnership recognition “Creating breakthrough opportunities for ULTRA-POOR WOMEN”, India.

GRAM SATHI

Organogram



Ours Major Partners:



Our Current Partners:



Disclosure :

NAME OF THE ORGANISATION	GRAM SATHI
TRANPARENCY PROFILE FOR THE YEAR OF	2024.2025
ORGANISATION TYPE	TRUST
REGISTRATION DETAILS	Registered under Indian Trust Act, 1882 Registration No. SL No.5383 D.No.IV-18 (Banka, Bihar)
REGISTRATION DATE	25th April, 2007 (Bihar)
FCRA REGISTRATION NUMBER AND VALIDITY	Registered under FCRA, 2010 Registration No. 031010015 Renewal Dated : 26.05.2023 Validity : 30.09.2028
12 REGISTRATION NUMBER	AABTG0514CE20124
	Validity : 2026.27
80 G REGISTRATION NUMBER & VALIDITY	AABTG0514CF20213 Validity 2026-27
PAN NUMBER	AABTG0514C
TAN NUMBER	PTNG05838A
CSR REGISTRATION NUMBER	CSR00001608
NITI AAYOG ID NO. (NGO DARPAN)	BR/2013/0063283
GST NUMBER	20AABTG0514C1ZR
HEAD OF THE ORGANISATION	NAME : Devanand Kumar Designation : Managing Trustee cum Project Director Phone No. : +91 8809597125 E-MAIL : gramsathi@gmail.com
KEY CONTACT PERSON	NAME : Manju Hansda Designation : President Phone No. : +91 8986675327 E-MAIL : gramsathi@gmail.com
Website	www.gramsathi.org



